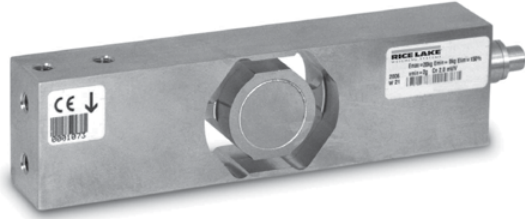
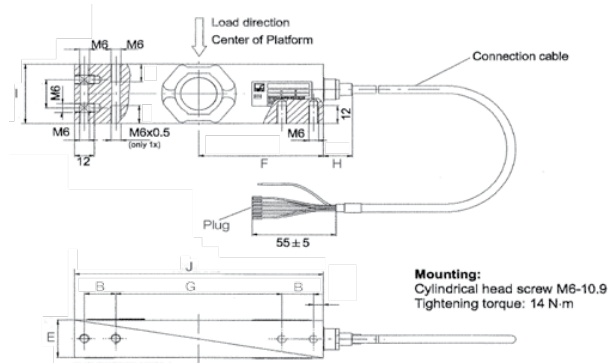


RLPWM15HE Single Point, Stainless Steel IP69K, Hermetically sealed, NTEP 1:5000 Class III Single Cell



Picture is a representation of actual product



SPECIFICATIONS

Full Scale Output:
2.0 mV/V

Output Resistance:
350 ohms +/- 10

Input Resistance:
380 ohms +/- 15

Material/Finish:
Stainless Steel

Temperature:
Compensated range
14°F to 104°F/-10°C to 40°C

Safe Overload:
150% Full scale

Rated Excitation:
10V DC (15V maximum)

Total Error:
0.02% Full scale

Insulation Resistance:
1000 megohms

Seal Type:
Hermetically sealed, IP69K

Cable Length:
3.1 m/10 ft
.86 m/2.83 ft

Cable Diameter:
.212 PVC jacket

Cable Color Code:
Blue+ Excitation
Black- Excitation
Green+ Sense
Grey- Sense
White+ Signal
Red- Signal

Warranty:
Two-year limited warranty

Approvals:

DIMENSIONS

RATED CAPACITY	B	E	F	G	H	I	J
kg/mm							
10-100	19	25	75	100	17.5	40	150
lb/inches							
22/220.5	.75	.98	2.95	3.94	.69	1.57	5.91

ORDER INFORMATION: 10 FT CABLES

LOAD RATING	PART #	PRICE
10 kg (22.0 lb)	108685	Consult
20 kg (44.1 lb)	108686	Consult
50 kg (110.2 lb)	108687	Consult
100 kg (220.5 lb)	108688	Consult

INTERCHANGEABLE PRODUCTS

MANUFACTURER	MODEL	PAGE #
HBM®	PW15AH	252

ORDER INFORMATION: 2.83 FT CABLES

LOAD RATING	PART #	PRICE
10 kg (22.0 lb)	107174	Consult
20 kg (44.1 lb)	107175	Consult
50 kg (110.2 lb)	107176	Consult
100 kg (220.5 lb)	107177	Consult